

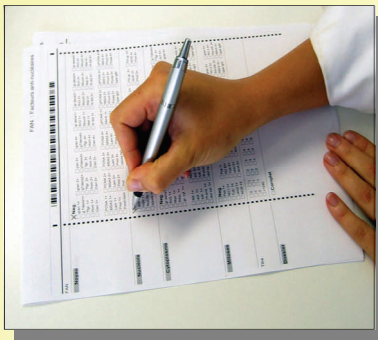
Scan'Bac Results



Scan'Bac « Results » enables the **automatic data capture** from all your laboratory results forms.

Scan'Bac « Results » **REPLACES** keyboard data entry by data collection through document scanning, offering great advantages in **TIME SAVED** and **ACCURACY**.

Scan'Bac « Results » archives an image of each scanned document, which can later be retrieved, viewed, or printed.



a form



a scanner



the end of keyboard input!

The form templates are created and modified by you, according to your needs.

The documents (standard paper) can be printed automatically from the central system.

Forms can be customized: file number, patient name, date of birth etc., show previous results or other data from the central system.

Tick the checkboxes according to the test results and observations. Numerical data can be captured using the optional intelligent character recognition module (I.C.R.)

Following scanning, the results are automatically transferred to the central information system.

Throughput is 6 to 12 sheets per minute, depending on the type of scanner.

Data collection misreads are managed, as well as scanning logs and image archiving, etc...

Scan'Bac Results Advantages

Compared to keyboard input:

- Saves time**.....eliminates keyboard entry, reduces data-input time
- Data availability**.....reports are immediately available
- Accuracy**.....eliminates manual data entry errors

Compared with other automatic data collection systems :

- Flexible**.....create your own data collection sheets
- Easy**.....standard equipment (computer, printer, scanner)
- Economical**.....standard A4 paper. No need for professional printing
- I.C.R.**.....intelligent character recognition for numerical data

Page example

Form creation is very easy.

Forms are created by the lab. itself.

Initial training provides the first documents required by the lab.

Checkboxes can be completed in pencil, pen, or felt tip and can be in black, red or blue.... as shown in the example opposite.

Folio : 006721/ Le 18/12/2006 10:30:03
Dossier : 061204082901 Du 04/12/06
Analyses: ECBU\MUCRI\MUCYL\MUCCL\MUCU1 Nature
Cristaux Absence de cristaux

■ **Examen Macroscopique**

■ Recueil Recueil aseptique
■ Flacon stérile transmis

■ Aspect Foncée
■ Légèr. trouble

■ pH 5 6 7 8

A high number of references : more than 350 installed systems

From specialised laboratories (CERBA, LCL, MERIEUX) to the largest hospital centres (APHP) and the smallest hospitals (CHG, CHI) as well as private laboratories, Scan'Bac is in wide use throughout the French-speaking European countries (France, Belgium, Luxembourg, Switzerland)

Rapid return on investment starting from 30 sheets processed per day.

Scan'Bac Results is compatible with most Laboratory Information Systems.

3SI provides onsite installation and training.